

KT&C Security Products



A Leader of Visual Technology

Night Vision/Outdoor Camera

Zoom Camera

Speed Dome(PTZ) Camera

Dome Camera

Bullet Camera

Square Camera

Bullet Camera

Bullet Camera

HDcctv Camera

HD Network Camera

Analog Camera

LPR Camera

FA Camera

KT&C

Security

Products

The Most Advanced Camera PRODUCTS



HDcctv Camera

KPT-SPDN120HD



1080p Full HD

- 1080p (1920x1080) @ 30fps
- 1/3" SONY CMOS
- AF 12x Optical Zoom (f=5.0(Wide)~60.0mm(Tele))
- TDN (ICR) / WDR / 3DNR / OSD
- Pan 360° Endless Rotation, Tilt 0~180°
- 210 Preset Position, 8 Auto Scan, 6 Pattern
- 8 Tours consists of Preset Patterns and Scans
- 4 Alarm Input and 1 Alarm Output
- Various mounting brackets available
- AC24V Only / Ø112mm / IP66

KPC-HDB450



1080p Full HD WDR DNR

- 1080p (1920x1080) @ 30fps
- 1/3" Panasonic CMOS
- f=3.6, 6mm Board Lens
- WDR / BLC / AGC / 3DNR / DSS / OSD
- DC12V

KPC-HD38M **NEW**



1080p Full HD WDR DNR

- 1080p (1920x1080) @ 30fps
- 1/3" SONY Exmor CMOS
- f=3.6, 6mm Board Lens
- f=3.7mm(3Mpx.), 8mm(1.3Mpx.) Mega pixel Lens
- WDR / BLC / AGC / 3DNR / DSS / OSD
- RS-485 Communication / DC12V

KPC-HNV522 **NEW**



1080p Full HD WDR DNR

- 1080p (1920x1080) @ 30fps
- 1/3" SONY Exmor CMOS
- 20 units IR LED with Max. 10m
- f=3.6 mm Board Lens
- WDR / BLC / AGC / 3DNR / DSS / OSD
- DC12V / AC24V Dual Voltage / IP66

KPC-HDN552 **NEW**



1080p Full HD WDR DNR HIGH POWER LED

- 1080p (1920x1080) @ 30fps
- 1/3" SONY Exmor CMOS
- 6 units Hi-Power LED with Max. 40m
- f=3.5~16mm Mpx. Varifocal Lens, DC IRIS
- WDR / BLC / AGC / 3DNR / DSS / OSD
- DC12V / AC24V Dual Voltage / IP66

KPC-HDX210 (1080p)
KPC-HDX131C/M (720p)



1080p Full HD WDR DNR

- 1080p (1920x1080) @ 30fps
- 1/3" SONY Exmor CMOS
- C/CS Mount / TDN (ICR)
- WDR / BLC / AGC / 3DNR / OSD
- DC12V / AC24V Dual Voltage

KPC-HN(D)V120 (1080p)
KPC-HN(D)V100 (720p)



1080p Full HD WDR DNR

- 1080p (1920x1080) @ 30fps
- 1/3" SONY Exmor CMOS
- 30 units IR LED with Max. 20 m (HNV120)
- f=3.6~16.0mm Mpx. Varifocal Lens
- TDN (ICR) / WDR / BLC / AGC / 3DNR / OSD
- DC12V / AC24V Dual Voltage / IP66

KPC-HDN720 (1080p)
KPC-HDN700 (720p)



1080p Full HD WDR DNR

- 1080p (1920x1080) @ 30fps
- 1/3" SONY Exmor CMOS
- 45 units IR LED with Max. 30 m
- f=3.0~9.0mm Mpx. Varifocal Lens
- TDN (ICR) / WDR / BLC / AGC / 3DNR / OSD
- DC12V / AC24V Dual Voltage / IP67

KPC-HDX222 **NEW**



1080p Full HD WDR DNR

- 1080p (1920x1080) @ 30fps
- 1/3" SONY Exmor CMOS
- C/CS Mount / WDR / 3DNR
- DSS / BLC / AGC / OSD
- DC12V / AC24V Dual Voltage

KPC-HNV121 / HDV121



1080p Full HD WDR DNR

- 1080p (1920x1080) @ 30fps
- 1/3" Panasonic CMOS
- 30 units IR LED with Max. 20 m (HNV121)
- f=3.6~16.0mm Mpx. Varifocal Lens
- TDN (ICR) / WDR / BLC / AGC / 3DNR / OSD
- DC12V / AC24V Dual Voltage / IP66

KPC-HDN721



1080p Full HD WDR DNR

- 1080p (1920x1080) @ 30fps
- 1/3" Panasonic CMOS
- 45 units IR LED with Max. 30 m
- f=3.0~9.0mm Mpx. Varifocal Lens, DC IRIS
- TDN (ICR) / WDR / 3DNR / DSS / OSD
- DC12V / AC24V Dual Voltage / IP67

KPC-HLD40 **NEW**



1080p Full HD WDR DNR

- 1080p (1920x1080) @ 30fps
- 1/3" SONY Exmor CMOS
- f=3.7mm Board Lens
- WDR / BLC / AGC / 3DNR / OSD
- DC12V / AC24V Dual Voltage

KPC-HLV40 **NEW**



1080p Full HD WDR DNR

- 1080p (1920x1080) @ 30fps
- 1/3" SONY Exmor CMOS
- f=3.7mm Board Lens
- WDR / BLC / AGC / 3DNR / OSD
- DC12V / AC24V Dual Voltage / IP66

KPC-HND122 / HDD122 **NEW**



1080p Full HD WDR DNR

- 1080p (1920x1080) @ 30fps
- 1/3" SONY Exmor CMOS
- 30 unit IR LED with Max 20m(HND122)
- f=3.6~16mm(1.3Mpx.), 3.5~16mm(3Mpx.) Varifocal Lens
- TDN (ICR) / WDR / BLC / AGC / 3DNR / OSD
- DC12V

HD DVR

KVR-HDS400S **NEW**



- 4ch HD-SDI Stand-alone DVR with H.264 and JPEG Dual Codec
- HD-SDI video input standard SMPTE 292M applied (1080p/720p Multi signal Input)
- Independent Video output (1HDMI, 1VGA)
- Adjustable resolution (1080p, 720p) and frame rate per channel
- 4 internal SATA type HDDs
- Support external storage - 1 eSATA, Giga Ethernet
- Support multi-stream for Recording, Network and Mobile view simultaneously
- Mobile App downloadable for Android & iPhone / CMS provided
- Real-time multi channels playback

KVR-HDS400E / HDS800E / HDS1600E **NEW**



- 4ch HD-SDI Stand-alone DVR with H.264 and JPEG Dual Codec
- H.264 HD (720P, 1080P) Recording as well as CIF, 2CIF & D1
- Independent Video output (1HDMI, 1VGA)
- Max. 95 fps recording with 1080p (1920x1080)
- Max. 120 fps recording with 720p (1280x720)
- Dual Streaming~ 1920x1080 resolution available through the network
- Event E-mail out with Jpeg image
- Support multi-stream for Recording, Network and Mobile view simultaneously
- Mobile App downloadable for Android & iPhone / CMS provided
- Real-time multi channels playback

IP MEGA PIXEL Camera / Network Surveillance System

KNC-Xi210HD (2.1Mpx)
KNC-Xi130HD (1.3Mpx)



2.1Mpx Full HD Dual Codec

- Onvif 1.02 Support
- 2.1 Mpx., 1/3" Exmor SONY CMOS
- 1080p(1920x1080)@30fps
- C/CS Mount / TDN (ICR)
- Dual Streaming (H.264 & MJPEG)
- DC12V / AC24V Dual Voltage / PoE

KNC-Ni720HD (2.1Mpx)
KNC-Ni700HD (1.3Mpx)



2.1Mpx Full HD Dual Codec

- Onvif 1.02 Support
- 2.1 Mpx., 1/3" Exmor SONY CMOS
- 1080p(1920x1080)@30fps
- f = 3.0-9.0mm Varifocal Lens, DC IRIS
- 45 units IR LED with Max. 15m
- TDN (ICR) / Dual Streaming (H.264 & MJPEG)
- DC12V / PoE / IP67

KNC-VNi120HD / VDi120HD (2.1Mpx)
KNC-VNi100HD / VDi100HD (1.3Mpx)



2.1Mpx Full HD Dual Codec

- Onvif 1.02 Support
- 2.1 Mpx., 1/3" Exmor SONY CMOS
- 1080p(1920x1080)@30fps
- 30 units IR LED with Max. 15m (VN120HD)
- f=3.0-9.0mm Varifocal Lens, DC IRIS
- TDN (ICR) / Dual Streaming (H.264 & MJPEG)
- DC12V / PoE / IP66

KNC-SPDNi120HD



2.1Mpx Full HD Dual Codec

- Onvif 1.02 Support
- 2.1 Mpx., 1/3" SONY CMOS
- 1080p(1920x1080)@30fps
- f=5.0-60.0mm 12x Optical, 10x Digital AF Zoom
- 253 Preset Positions, 8 Auto Scans, 6 Patterns
- Pan 360° Endless Rotation, Tilt 0°~180°
- 6 Tours consist of Preset Patterns and Scans
- 4 Alarm Input and 1 Alarm Output
- TDN (ICR) / Two way Full duplex Audio
- Dual Streaming (H.264 & MJPEG)
- Various mounting brackets available
- AC24V / High PoE (IEEE 802.3at) / IP66

KNC-SPDNi300 **NEW**



Dual Codec

- Onvif 1.02 Support
- 1/4" 960H SONY Super HAD CCD II
- D1 (NTSC: 720x480@30fps / PAL: 720x576@25fps)
- Auto Focus 30x Optical Zoom
- Pan 360° Endless Rotation, Tilt 0~180°
- 253 Preset Positions, 8 Auto Scans, 6 Patterns
- Two way, Full duplex Audio
- TDN (ICR) / Dual Streaming (H.264 / MJPEG)
- Various mounting brackets available
- AC24V / High PoE (IEEE 802.3at, Type 2) / IP66

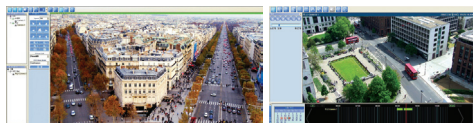
KNC-LVi40 / KNC-LDi40 **NEW**



2.1Mpx Full HD Dual Codec

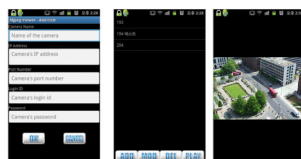
- Onvif 1.02 Support
- 2.1 Mpx., 1/3" Exmor SONY CMOS
- 1080p(1920x1080)@30fps
- f=3.7mm Board Lens
- Dual Streaming (H.264 & MJPEG)
- DC12V / PoE (IEEE 802.3af) / IP66 (LV140)

Smart NVR **NEW**



- Up to 16 channels of network cameras can be connected
- Support Mega-Pixel Camera up to 2M pixels
- Video format: H.264, Motion -JPEG
- Schedule, Event, Motion recording and forced recording options
- Support up to 6.6TB per HDD, max 160TB total disk space per system
- Support Pan / Tilt / Zoom Control
- DI Port control for cameras

OMV (Optinet Mobile Viewer on Android) **NEW**



- For a smart phone with CPU more than 1Ghz / 600Mhz
 - 3G Connection : 5fps@320x240
 - Wi-Fi Connection: MJPEG usage
 - 15fps@320x240 (1Ghz) / 10fps@320x240 (600Mhz)
- OMV(Optinet Mobile Viewer) application from KT&C can be used to view MJPEG streams being streamed from KT&C's network cameras

KVS-1000



- Dual Video Streams (MPEG4 & M-JPEG) at up to 30/25 fps in Full D1
- SD / SDHC Memory Card Support for Recoding Video Streams
- PoE with DC12V Power Output for Camera (PoE Class 2/3)
- Embedded 4CH Web Viewer
- Two-way Audio Support (Full Duplex)
- RS-485 Support for PTZ Camera with Various PTZ Protocols
- Multi-area Motion Detection
- Powerful Event Management / Upgradable Firmware

Mini Speed PTZ Camera

KPT-SPDN300

700TVL PTZ WDR DNR



- 1/4" SONY Double Scan Super HAD CCD II
- Ultra-High Resolution of 700 TVL
- Min. Illumination of 0.2 Lux/F1.6, 0.001 Lux/DSS, 0.1 Lux/ICR
- 30x Optical (f=3.49 ~ 104.02mm), 10x Digital AF Zoom
- TDN (ICR) / WDR / Privacy Masking / OSD
- 210 Preset Position, 8 Auto Scan, 8 Pattern
- Pan 360° Endless Rotation, Tilt 0°~180°
- 8 Tours consist of Preset Patterns and Scans
- 4 Alarm Input and 1 Alarm Output
- Various mounting brackets available
- AC24V / Ø112mm / IP66

KPT-SPDN231

PTZ WDR DNR



- 1/4" SONY Double Scan Super HAD CCD II
- High Resolution of 600 TVL
- Min. Illumination of 0.2 Lux/F1.6, 0.001 Lux/DSS, 0.1 Lux / ICR
- 23x Optical (f=3.6~82.8mm), 10x Digital AF Zoom
- TDN (ICR) / WDR / Privacy Masking / OSD
- 210 Preset Position, 8 Auto Scan, 8 Pattern
- Pan 360° Endless Rotation, Tilt 0°~180°
- 8 Tours consist of Preset Patterns and Scans
- 4 Alarm Input and 1 Alarm Output
- Various mounting brackets available
- AC24V / Ø112mm / IP66

Night Vision / Outdoor Camera

KPC-N751 **NEW**



700TVL **HIGH POWER LED**

- 1/3" 960H SONY EXview HAD CCD II
- Ultra-High Resolution of 700 TVL
- 10 units High Power LED with Max. 70 m
- f=5.0~50mm Varifocal Auto IRIS
- TDN (ICR) / 2DNR / ATR (Digital WDR) / OSD
- External Zoom & Focus Adjustable
- DC12V / AC24V Dual Voltage / IP67

KPC-N551 **NEW**



700TVL **HIGH POWER LED**

- 1/3" 960H SONY EXview HAD CCD II
- Ultra-High Resolution of 700 TVL
- 5 units High Power LED with Max. 45m
- f=5.0~50.0mm Aspheric Varifocal DC IRIS Lens
- TDN (ICR) / 2DNR / ATR (Digital WDR) / OSD
- DC12V / AC24V Dual Voltage / IP66

KPC-N701



700TVL **SMART LED**

- 1/3" 960H SONY EXview HAD CCD II
- Ultra-High Resolution of 700 TVL
- f=2.8~12mm / 9~22mm Varifocal Auto IRIS Lens
- 45 units Smart IR LED with Max. 50m / Smart IR
- TDN (ICR) / 2DNR / ATR (Digital WDR) / OSD
- DC12V / AC24V Dual Voltage / IP67

KPC-N681



700TVL

- 1/3" 960H SONY EXview HAD CCD II
- Ultra-High Resolution of 700 TVL
- f=2.8~12mm / 9~22mm Varifocal Auto IRIS Lens
- 35 Units IR LED with Max. 45 m
- TDN (ICR) / 2DNR / ATR (Digital WDR) / OSD
- DC12V / AC24V Dual Voltage / IP67

KPC-N601



700TVL

- 1/3" 960H SONY EXview HAD CCD II
- Ultra-High Resolution of 700 TVL
- Varifocal Auto IRIS Lens
- 18 Units IR LED with Max. 35m
- TDN (ICR) / 2DNR / IP67
- DC12V / AC24V Dual Voltage

KPC-N501



700TVL

- 1/3" 960H SONY EXview HAD CCD II
- Ultra-High Resolution of 700 TVL
- 20 units Invisible IR LED with Max. 25m
- f=2.8~12mm / 3.8~9.5mm / 9~22mm Varifocal Auto IRIS Lens
- TDN (ICR) / 2DNR / ATR (Digital WDR) / OSD / IP66

KPC-DN301



700TVL

- 1/3" 960H SONY EXview HAD CCD II
- Ultra-High Resolution of 700 TVL
- f=3.6, 4, 6, 8mm Fixed IR Board Lens
- 20 units IR LED with Max. 30 m
- TDN (ICR) / DC12V / IP67

KPC-VF291



700TVL

- 1/3" 960H SONY EXview HAD CCD II
- Ultra-High Resolution of 700 TVL
- Min. Illumination of 0.06 Lux
- f=3.5~16.0mm Water Proof Varifocal Lens
- 2DNR, ATR (Digital WDR) / OSD
- DC12V / AC24V Dual Voltage / IP67

KPC-N500



- 1/3" SONY Super HAD CCD II
- High Resolution of 600 TVL
- f=2.8~12mm / 3.8~9.5mm / 9~22mm Varifocal Auto IRIS Lens
- 20 units IR LED with Max. 30m
- TDN (ICR) / 3DNR / BLC / AGC / D-WDR / AWB / OSD
- DC12V / AC24V Dual Voltage / IP66

KPC-DN300 / KPC-N300



- 1/3" SONY Super HAD CCD II
- High Resolution of 550 TVL
- f=3.6, 4, 6, 8mm Fixed IR Board Lens
- 30 units IR LED with Max. 30m
- TDN (ICR) (DN300) / Digital Day & Night (N300)
- DC12V / IP67

KPC-VF290



DNR

- 1/3" SONY HAD CCD II
- High Resolution of 550 TVL
- Min. Illumination of 0.2 Lux
- f=3.5~16.0mm Water Proof Varifocal Lens
- 3DNR, AGC, BLC, D-WDR, AWB / OSD
- External Zoom & Focus Adjustable
- DC12V / AC24V Dual Voltage / IP67

KPC-N570



DNR

- 1/3" SONY Super HAD CCD II
- High Resolution of 600 TVL
- 70 units IR LED with Max. 50m
- f=2.8~12mm / 3.8~9.5mm / 9~22mm Varifocal Auto IRIS Lens
- TDN (ICR) / 3DNR / BLC / AGC / D-WDR / AWB / OSD
- DC12V / AC24V Dual Voltage / IP66

KPC-TW670



- 1/3" SONY Super HAD CCD II
- High Resolution of 550 TVL
- f=3.6, 6, 8, 12, 16mm Fixed IR Board Lens
- 30 units IR LED with Max. 50m
- True Day & Night with Dual CCD
- DC12V / AC24V Dual Voltage / IP67

KPC-WDRN600H



WDR

- 1/3" SONY Super Double-Density Interline CCD
- High Resolution of 550 TVL
- f=2.8~12mm / 3.8~9.5mm Varifocal Auto IRIS Lens
- 18 units IR LED with Max. 30 m
- TDN (ICR) / WDR / DSS up to 500x / OSD
- DC12V / AC24V Dual Voltage / IP67

KPC-ZN180



18x Zoom

- 1/3" SONY Super HAD CCD II
- High Resolution of 550 TVL
- AF18x Optical Zoom (f=4.7~84.6mm), 10x Digital Zoom (Total 180x Zoom)
- Hybrid IR 18x Zoom / Optical Zoom (f=4.7~84.6mm, F1.6(W)~F2.8(T))
- 10 units (Camera) / 16 units (Illuminator) Hybrid IR LED Max. 150m
- Pan & Tilt Device Installation
- Built in Heater & Dual Fanning System (Heater Option)
- TDN (ICR) / DC12V / IP65
- KA-18ZN - Remote Control for KPC-ZN180

Box Camera

KPC-WDR7000



700TVL WDR DNR

- 1/3" 960H SONY Double Scan Super HAD CCD II
- Ultra-High Resolution of 700 TVL
- C/CS Mount / 3x Digital Zoom
- TDN (ICR) / 3DNR / DSS / WDR / OSD
- Back Focus Adjustment Knob
- RS-485 Communication / DC12V / AC24V Dual Voltage

KPC-DN6360 / KPC-6360 **NEW**



700TVL

- 1/3" 960H SONY EXview HAD CCD II
- Ultra-High Resolution of 700 TVL
- TDN (ICR) (KPC-DN6360) / C/CS Mount
- 2DNR / ATR (D-WDR) / OSD
- DC12V / AC24V Dual Voltage

KPC-DN6300 / KPC-6300



700TVL

- 1/3" 960H SONY EXview HAD CCD II
- Ultra-High Resolution of 700 TVL
- TDN (ICR) (KPC-DN6300) / C/CS Mount
- 2DNR / ATR (D-WDR) / OSD
- DC12V / AC24V Dual Voltage

KPC-WDR6300



700TVL WDR DNR

- 1/3" 960H SONY Double Scan Super HAD CCD II
- Ultra-High Resolution of 700 TVL
- C/CS Mount / 3x Digital Zoom
- TDN (ICR) / 3DNR / DSS / WDR / OSD
- RS-485 Communication / DC12V / AC24V Dual Voltage

KPC-DN6250



- 1/3" SONY Super HAD CCD II
- High Resolution of 600 TVL
- TDN (ICR) / C/CS Mount / 3DNR / BLC
- AGC / D-WDR / AWB / OSD
- Motion Detection with Alarm Output
- DC12V / AC24V Dual Voltage

KPC-SLL650BH



- 1/3" SONY EXview HAD CCD
- High Resolution of 600 TVL (B/W)
- Min. Illumination of 0.001 Lux / F2.0 without DSS or IR (KPC-SLL 650BH)
- C/CS Mount (DC / Video Drive)
- SLL (Super Low Luminance)
- DC12V Only

Full Auto Logic Zoom Camera

KPC-ZA180



KPC-ZM(S)180

18x Zoom

- 1/3" SONY Super HAD CCD II
- High Resolution of 550 TVL
- Min. Illumination of 0.1 Lux(Color) / 0.03 Lux(B/W)
- 18x Zoom Lens (f=4.7~84.6mm)
- TDN (ICR) / DSS up to 128x / OSD
- Preset: 512(Internal), 128(External)

KPC-ZA270



KPC-ZM(S)270

27x Zoom

- 1/4" SONY Super HAD CCD II (without WDR)
- 1/4" SONY Double Scan EXview HAD CCD (with WDR)
- High Resolution of 550 TVL
- Min. Illumination of 0.2 Lux(Color) / 0.06 Lux(B/W)
- 27x Optical Zoom Lens (f=3.43~92.7mm)
- TDN (ICR) / DSS up to 128x / OSD
- Preset: 512(Internal), 128(External)

KPC-ZA360



KPC-ZM(S)360

36x Zoom

- 1/4" SONY Super HAD CCD II (without WDR)
- 1/4" SONY Double Scan EXview HAD CCD (with WDR)
- High-Resolution of 550 TVL
- Min. Illumination of 0.2 Lux(Color), 0.06 Lux(B/W)
- 36x Optical Zoom Lens (f=3.4~122.4mm) / Auto Focus
- TDN (ICR) / DSS up to 128x / OSD
- Preset: 512(Internal), 128(External)

KPC-ZAK220 **NEW**



22x Zoom

- 1/4" SONY Super HAD CCD II
- High-Resolution of 600 TVL
- Min. Illumination of 0.2 Lux
- 22x optical zoom Lens (f=3.9~85.8mm)
- DSS up to 256x / D-WDR / HSBLC / BLC / OSD
- Preset: 512(Internal), 128(External)

Camera for Factory Automation System

KPC-S145CL60 / 20 / 21-M



- SONY 2/3" Progressive Scan CCD (S145CL60-M)
- SONY 1/2" Progressive Scan CCD (S145CL20-M)
- SONY 1/2" Progressive Scan CCD & 2x Enhanced Low Sensitivity (S145CL21-M)
- High Resolution : 1.45 Mpx.
- Number of Effective Pixels : 1392 x 1040
- Compliance with Camera Link Standard
- Area of Interest (AOI) Scanning / Binning
- Internal / External VD, SYNC, Video Signal
- Excellent Shock and Vibration Resistance
- Lens Mount : C/CS

KPC-S145FA60 / 20 / 21-M



- SONY 2/3" Progressive Scan CCD (S145FA60-M)
- SONY 1/2" Progressive Scan CCD (S145FA20-M)
- SONY 1/2" Progressive Scan CCD & 2x Enhanced Low Sensitivity (S145FA21-M)
- High Resolution : 1.45 Mpx.
- Number of Effective Pixels : 1392 x 1040
- IEEE1394a, 400Mbps / Binning
- IIDC 1.31 Compliance / Video IRIS Signal Output
- Format 7 support / Area of Interest (AOI) Scanning
- Compact Size / Partial Scanning
- LUT (2048 points) / Random Trigger Shutter
- Min. Exposure Time : 10us
- Lens Mount : C/CS

LPR Camera

KPC-LP751 **NEW**



700TVL HIGH POWER LED

- 1/3" 960H SONY EXview HAD CCD II
- Ultra-High Resolution of 700 TVL (Only B/W)
- Plate capture up to 75mph (120Km/H)
- 10 units High Power LED
- Captures License Plate from 16ft~90ft (5m~28m)
- f=5.0~50.0mm DC Varifocal Lens
- External Zoom & Focus Adjustable
- DC12V / AC24V Dual Voltage / OSD / IP67

KPC-LP500



- 1/3" SONY Super HAD CCD II
- High Resolution of 600 TVL (Only B/W)
- Plate capture up to 35mph (56Km/H)
- 20 units IR LED
- Captures License Plate from 8ft~33ft (2.5m~10m)
- f=9.0~22.0mm Varifocal Lens
- DC12V/AC24V Dual Voltage / OSD / IP66

Plastic & Vandal Proof Dome Camera

KPC-VNW200 / VDW200



700 TVL WDR DNR

- 1/3" 960H SONY Double Scan Super HAD CCD II
- Ultra-High Resolution of 700 TVL
- 30 units IR LED with Max. 30m (VNW200)
- Min. Illumination of 0.08 Lux (VDW200)
- DC IRIS Varifocal Lens / 3x Digital Zoom
- TDN (ICR) / 3DNR / WDR / DSS / OSD
- 3-Axis Gimbal Dome Housing / IP66

KPC-VNE200 / VDE200



700 TVL

- 1/3" 960H SONY EXview HAD CCD II
- Ultra-High Resolution of 700 TVL
- 30 units IR LED with Max. 30m (VNE200)
- Min. Illumination of 0.05 Lux (VDE200)
- DC IRIS Varifocal Lens
- TDN (ICR) / 2DNR / ATR (Digital WDR) / OSD
- 3-Axis Gimbal Dome Housing / IP66

KPC-VNE101 / VDE101



700 TVL

- 1/3" 960H SONY EXview HAD CCD II
- Ultra-High Resolution of 700 TVL
- 30 Units IR LED with Max. 30m (VNE101)
- Min. Illumination of 0.05 Lux (VDE101)
- DC IRIS Varifocal Lens
- TDN (ICR) /2DNR / ATR (Digital WDR) / OSD
- 3-Axis Gimbal Dome Housing / IP66

KPC-LV40 / KPC-LD40 NEW



700 TVL WDR DNR

- 1/3" 960H SONY Double Scan Super HAD CCD II
- Ultra-High Resolution of 700 TVL
- Min. Illumination of 0.1 Lux
- f=3.6mm Board Lens
- Digital Day & Night
- WDR / DSS / BLC / AGC / OSD
- IP66 (LV40)

KPC-VD61



700 TVL WDR

- 1/3" 960H SONY EXview HAD CCD II
- Ultra-High Resolution of 700 TVL
- Min. Illumination of 0.05 Lux
- f=2.97, 3.6, 6mm Fixed IR Board Lens
- 3-Axis Gimbal Bracket / IP67

KPC-D81



700 TVL DNR

- 1/3" 960H SONY EXview HAD CCD II
- Ultra-High Resolution of 700 TVL
- f=2.45, 2.97, 3.6, 6, 8, 12mm Fixed IR Board Lens
- 3-Axis Gimbal Bracket

KPC-DNE100 / DE100



700 TVL

- 1/3" 960H SONY EXview HAD CCD II
- Ultra-High Resolution of 700 TVL
- 30 units IR LED with Max. 30m (DNE100)
- DC IRIS Varifocal Lens
- TDN (ICR) / 2DNR / ATR (Digital WDR) / OSD
- 3-Axis Gimbal Dome Housing

KPC-VNH101 / VDH101



- 1/3" SONY Super HAD CCD II
- High Resolution of 600 TVL
- 30 unit IR LED with Max. 30m (VNH101)
- Min. Illumination of 0.00001 Lux / F1.2 (VDH101)
- DC IRIS Varifocal Lens
- TDN (ICR) / 3DNR, BLC, AGC / OSD / IP66

KPC-VNW101 / VDW101



WDR

- 1/3" SONY Vertical Double-Density Interline CCD
- High Resolution of 550TVL
- 30 unit IR LED with Max. 30m (VNW101)
- Min. Illumination of 0.00001 Lux / F1.2 (VDW101)
- DC IRIS Varifocal Lens
- TDN (ICR) / WDR / DSS up to 500x / OSD / IP66

KPC-VNH100 / VDH100



DNR

- 1/3" SONY Super HAD CCD II
- High Resolution of 600TVL
- 22 unit IR LED with Max. 30m (VNH100)
- Min. Illumination of 0.00001 Lux / F1.2 (VDH100)
- DC IRIS Varifocal Lens
- TDN (ICR) / 3DNR / BLC / AGC / OSD
- 3-Axis Gimbal Bracket / IP66

KPC-VNW100 / VDW100



WDR

- 1/3" SONY Vertical Double-Density Interline CCD
- High Resolution of 550TVL
- 22 unit IR LED with Max. 30m (VNW100)
- Min. Illumination of 0.00001 Lux / F1.2 (VDW100)
- DC IRIS Varifocal Lens
- TDN (ICR)WDR, BLC, AGC / OSD
- 3-Axis Gimbal Bracket / IP66

KPC-D570 / KPC-D571



- 1/3" SONY Super HAD CCD II
- High Resolution of 550 TVL
- Min. Illumination of 0.05 Lux / Faceplate
- Fixed IRIS Board Lens
- Pan & Tilt - Pan 360° / Tilt 10~90°
- 3-Axis Gimbal Bracket / IP66

KPC-S800DC, S801DC, E800



- 1/3" SONY Super HAD CCD II (800H)
- High Resolution of 550 TVL (800H)
- Min. Illumination of 0.05 Lux / Faceplate
- f=3.7mm Fixed IRIS Pinhole Lens
- Pan & Tilt - Pan 360° / Tilt 0~120°
- 3-Axis Gimbal Bracket

KPC-D950



- 1/3" SONY Super HAD CCD II
- High Resolution of 550 TVL
- 12 units IR LED with Max. 15m
- Fixed IRIS IR Corrective Board Lens
- IR Reflection Free (IRF)
- Pan & Tilt - Pan 360° / Tilt 70°

KPC-DW955



- 1/3" SONY Super HAD CCD II
- High Resolution of 550 TVL
- Min. Illumination of 0.05 Lux / Faceplate
- f=1.78 mm, 170° Wide Angle
- Pan 360° / Tilt 80°
- Wide Angle Aluminum Dome Camera

KPC-DNH100 / DH100



DNR

- 1/3" SONY Super HAD CCD II
- High Resolution of 600 TVL
- 30 units IR LED Max. 30m (DNH100)
- Min. Illumination of 0.00001 Lux / F1.2 (DH100)
- DC IRIS Varifocal Lens
- TDN (ICR) / 3DNR, AGC, BLC / OSD
- Pan & Tilt - Pan 360° / Tilt 140°
- 3-Axis Gimbal

KPC-DNW100 / DW100



WDR

- 1/3" SONY Vertical Double-Density Interline CCD
- High Resolution of 550TVL
- 30 units IR LED Max. 30m (DNW100)
- Min. Illumination of 0.00001 Lux / F1.2 (DW100)
- Pan & Tilt - Pan 360° / Tilt / DC IRIS Varifocal Lens
- TDN (ICR) / BLC / AGC / WDR / OSD
- 3-Axis Gimbal Bracket

KPC-D80



- 1/3" SONY Super HAD CCD II
- High Resolution of 550 TVL
- Standard Resolution of 380 TVL
- 3-Axis Gimbal Bracket
- Pan & Tilt - Pan 360° / Tilt 160°

KPC-D530



- 1/3" SONY Super HAD CCD II
- High Resolution of 550 TVL
- f=3.8~9.5mm Varifocal Lens
- Pan & Tilt - Pan 360° / Tilt 120°
- 3-Axis Gimbal Bracket



Bullet Camera

KPC-E230 / KPC-EJ230



700 TVL

- 1/3" 960H SONY EXview HAD CCD II
- Ultra-High Resolution of 700 TVL
- Fixed Board Lens
- 2DNR / ATR (D-WDR) / OSD (with Joystick - EJ230)
- Compact Size - Ø23 / IP67 (E(J)230UWX)

KPC-E190



700 TVL

- 1/3" 960H SONY EXview HAD CCD II
- Ultra-High Resolution of 700 TVL
- Board, Pinhole Lens
- 2DNR

KPC-DNR230



- 1/3" SONY Super HAD CCD II
- High Resolution of 600 TVL
- Min. Illumination of 0.0001 Lux / F2.0
- Board, Pinhole Lens
- Digital Day & Night / 3DNR / D-WDR / OSD
- Compact Size - Ø23 / IP67 (DNR230HWX)

KPC-S230C(H)P3



- 1/3" SONY Super HAD CCD II
- High Resolution of 550 TVL
- f=3.7mm Flat Cone Pinhole Lens
- Min. Illumination of 0.05 Lux / Faceplate(CH)
- IP67 (S230C(H)WX)
- Options : Mirror Mode / Ø23
- Optional Model: KPC-S230CP3 : 380TVL KPC-S230CHV : 550TVL, Fixed IRIS Varifocal

KPC-HD353 / KPC-HD230



- 1/3" SONY Super HAD CCD
- High Resolution of 520 TVL
- Fixed IRIS Varifocal (HD353)
- Fixed IRIS Board, Pinhole (HD230)
- Ø37 (HD353) / Ø23 (HD230)
- RS-485 Remote Setup Control
- 3x Digital Zoom / IP67 (HD230CWX)
- Options: EXview CCD, Digital Day & Night, Remote Controller

Square Camera

KPC-EW38U **NEW**



700 TVL DNR

- 1/3" 960H SONY Double Scan Super HAD CCD II
- Ultra-High Resolution of 700 TVL
- f=3.6, 6mm Board Lens
- Digital Day & Night
- WDR, BLC, HLC, AGC, 2D /3D DNR / DSS
- Digital Zoom 3X / OSD with Joystick
- RS-485 (Protocol / Pelco-D)
- Compact size of 38(W) x 38(H)

KPC-E23 **NEW**



700 TVL

- 1/3" 960H SONY EXview HAD CCD II
- Ultra-High Resolution of 700 TVL
- Fixed Board, Pinhole Lens
- Digital Day & Night / 2DNR / ATR (D-WDR) / BLC / OSD
- Compact Size 22 x 23 (mm)

KPC-E700



700 TVL

- 1/3" 960H SONY EXview HAD CCD II
- Ultra-High Resolution of 700 TVL
- Fixed Board, Pinhole, Varifocal Lens
- 2DNR / ATR (Digital WDR) / OSD
- Compact Size 30x30 (mm)

KPC-DNR700



DNR

- 1/3" SONY Super HAD CCD II
- High Resolution of 600 TVL
- Board, Pinhole, Varifocal Lens
- 32x Digital Zoom / Digital Day & Night
- 3DNR / D-WDR / BLC / OSD with Joystick
- Compact Size 30x30 (mm)
- RS-485 Communication

KPC-HD38CZ



- 1/3" SONY Super HAD CCD
- High Resolution of 520 TVL
- 3x Digital Zoom / AGC
- Fixed IRIS Board, Pinhole, Varifocal Lens
- Compact Size 38x38(mm)
- Options: Digital Day & Night, Remote Controller
- Optional Model: KPC-HD38CZV (Varifocal)

KPC-S226C



- 1/4" SONY Super HAD CCD
- Standard Resolution of 380 TVL
- Fixed Board, Pinhole Lens
- Compact Size 29x25(mm) / DC5V
- Options: Mirror Mode, Power Converting Cable (DC12V to DC5V)
- Optional Model: KPC-S226CP3(Flat Pinhole)

Module Camera

ACE-EDR380



700 TVL WDR DNR

- 1/3" 960H SONY Double Scan Super HAD CCD II
- Ultra-High Resolution of 700 TVL
- Min. Illumination of 0.04 Lux
- Fixed Board, Pinhole, Varifocal Lens or C/CS Mount (DC / VIDEO)
- 3x Digital Zoom
- TDN (ICR) / 3DNR / DSS / WDR / OSD
- Privacy Masking / Motion, Face Detection
- RS-485 Communication
- Compact Size 38x38(mm)

ACE-M321



700 TVL

- 1/3" 960H SONY EXview HAD CCD II
- Ultra-High Resolution of 700 TVL
- Min. Illumination of 0.05 Lux
- Fixed Board, Pinhole Lens
- 2DNR / ATR (Digital WDR) / OSD (Option)
- Compact Size 32x32(mm)

ACE-M387



700 TVL

- 1/3" 960H SONY EXview HAD CCD II
- Ultra-High Resolution of 700 TVL
- Min. Illumination of 0.05 Lux
- Fixed Board, Pinhole, Varifocal Lens, C/CS Mount
- TDN (ICR) / 2DNR / ATR(Digital WDR)
- Privacy Masking, Motion Detection / OSD
- Compact Size 38x38(mm)

ACE-M385



DNR

- 1/3" SONY Super HAD CCD II
- High Resolution of 600 TVL
- Min. Illumination of 0.0001 Lux (Sense-up)
- Fixed Board, Pinhole, Varifocal, C/CS Mount
- Digital Day & Night / 3DNR / D-WDR / BLC / OSD
- RS-485 Communication
- Compact Size 38x38(mm)

ACE-WDR380



WDR

- 1/3" SONY Vertical Double-Density Interline CCD
- High Resolution of 550 TVL
- Min. Illumination of 1.0 Lux/F2.0(AGC Max), 0.001 Lux(DSS)
- Fixed IRIS Board, Pinhole, Varifocal Lens, C/CS Mount
- WDR / DSS up to 500x / OSD
- RS-232C Remote Control
- Compact Size 38x38(mm)

ACE-S360 / ACE-S560



- 1/3" Sony Super HAD CCD
- Resolution of 420TVL(B/W) / 600TVL(B/W)
- Min. Illumination of 0.05 Lux@F2.0 / 0.1 Lux@F2.0
- AGC / BLC
- Options : 1/3" Sony Exview CCD, Audio

KT&C

A Leader of Visual Technology

Global Head Office & Factory in Korea

KT&C Co.,Ltd

KT&C Bldg., 487-4 Bangwha-Dong,

Gangseo-Gu, Seoul, Korea

Tel : +82-2-3662-0118

Fax : +82-2-3662-0116

<http://www.ktnc.co.kr>

E-mail : ktnc@ktnc.co.kr / sales@ktnc.co.kr

Domestic Sales Corporation

GOHA Co.,Ltd

B-313 Woorim Lion's Valley, 39Yangpyeong 5-ga,

Yeongdeungpo-gu, Seoul(150-984), Korea

<http://www.goha.co.kr>

Tel : +82-2-3662-0088

Fax : +82-2-3662-8811

E-Mail : park27@goha.co.kr

Sales Office in CA USA (West Coast)

KT&C USA, Inc.

3240 Wilshire Blvd., #501,

Los Angeles, California 90010, USA

Tel : +1-213-381-0061

Fax : +1-213-381-0064

Toll Free : 1 + 888-767-CCTV (2288)

<http://www.ktncusa.com>

E-mail : sales-usa@ktncusa.com

Sales Office in China

KT&C China Co.,Ltd.

Rm 708-710, 212-Dong,

Tairan Factory Building, Tairan 9th Rd,

Futian, Shenzhen, Guangdong, China

Tel : +86-755-8835-0905

Fax : +86-755-8835-0943

<http://www.ktnc-china.com>

Sales Office in NJ USA (East Coast)

KT&C America, Inc.

777 Terrace Ave., 4th Floor

Hasbrouck Heights, NJ 70604, USA

Tel : +1-201-393-0118

Fax : +1-201-393-0116

<http://www.ktncamerica.com>

E-mail : sales-america@ktncamerica.com

Sales Office in Australia

KT&C Australia Pty.Ltd.

Unit 5, 340 Chisholm Rd, Auburn NSW 2144

Tel : +61-2-9645-2252

Fax: +61-2-9645-2252

<http://www.ktnc.co.kr>

E-Mail: hoon@roadgreen.com.au

Night Vision/Outdoor Camera

Zoom Camera

Speed Dome(PTZ) Camera

Dome Camera

Bullet Camera

Square Camera

Bullet Camera

Module Camera

HDcctv Camera

HD Network Camera

Analog Camera

LPR Camera

FA Camera

KT&C **KT & C CO., LTD.**
Korea Technology and Communications



Special Attention: KT&C holding patent rights for its miniature CCD camera

KT&C **optiNet** **KrUZCam** All Right Reserved by KT&C August. 2012 Ver. II