

Connection length and wire requirement



RVV5*0.5mm²



RVV2*0.5mm²

401G - 401G

Connection Length	≤10M	≤15M	≤30M
1PC 401G	RVV5*0.3mm ²		
2PCS 401G	RVV5*0.3mm ²		/
3PCS 401G	RVV5*0.3mm ²	/	

The resistance rate for the wire should be $\leq 0.06\Omega/\text{m}$
In order to guarantee the best quality and operation, please choose the wire according to the above form. The distance between indoor monitor to the last 401G should be $\leq 30\text{m}$.



RVV3*0.5mm²

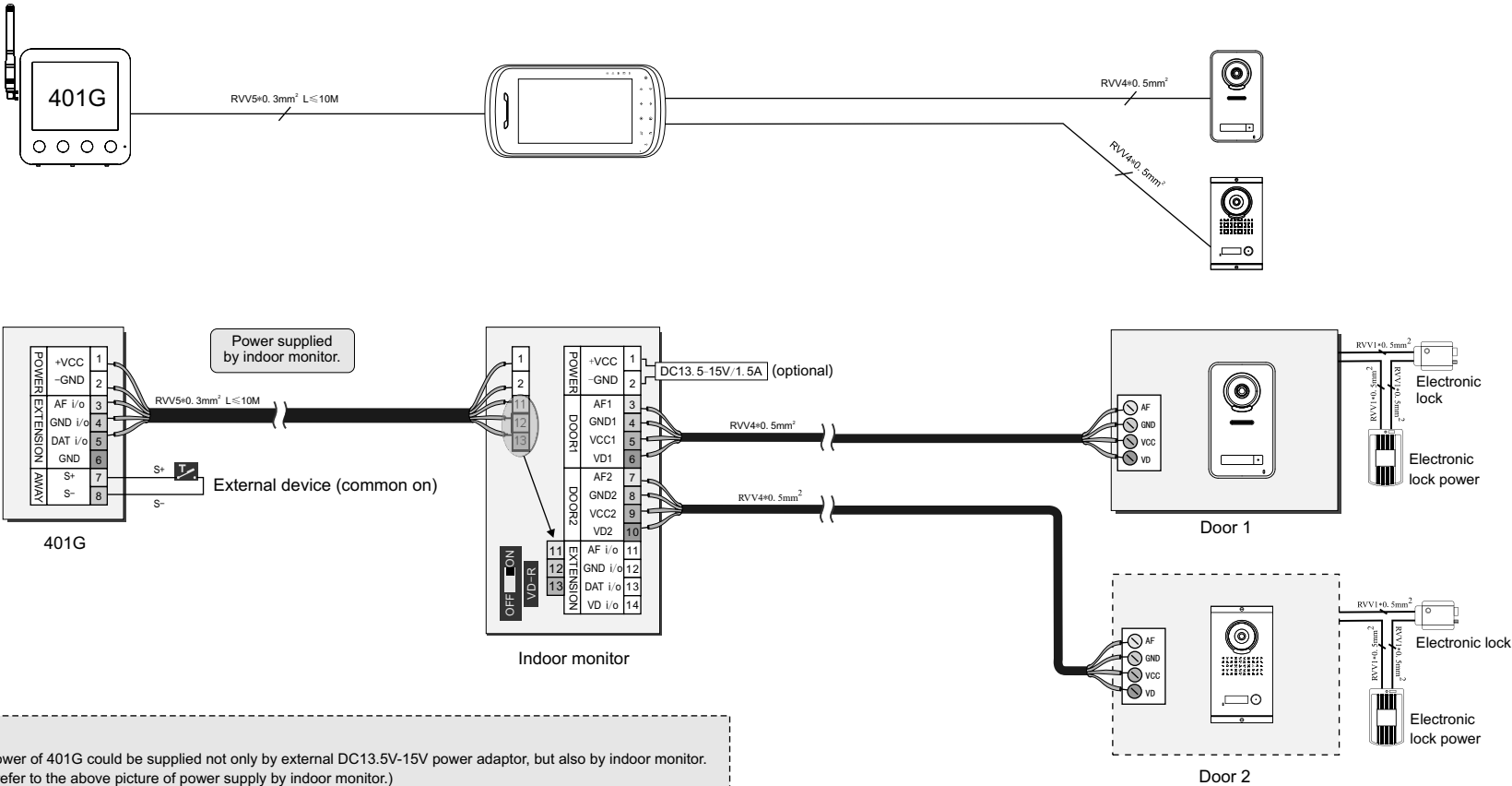
401G - Indoor monitor/ Other extension device

Connection Length	≤30M	≤50M
401G to indoor monitor	RVV5*0.3mm ²	/
AWAY extension terminal	RVV2*0.1mm ²	

Port connection polarity requirement

	Power	401G input	AWAY extension terminal
Polarity	✓	✓	
Non-polarity			✓

Wiring diagram

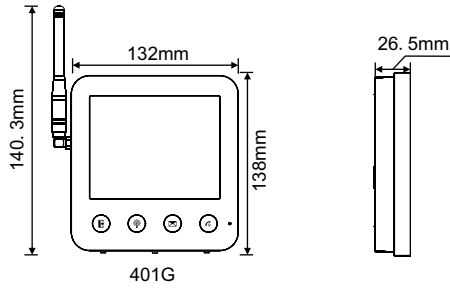


Installation attention

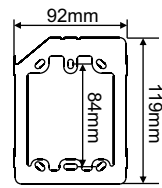
- When you choose the place to install the unit, please pay attention to:**
 - Keep sufficient space for ventilation and easy communication.
 - Keep sufficient space to adjust while installing.
 - Not put hot resource under the unit.
 - The socket outlet shall be installed near the equipment and shall be easily accessible.
- Do not expose the unit to sunshine or rain:**
 - Even if you do not use it, don't expose it to sunshine or rain.
- Do not expose to intense light:**
 - Spotlight may cause stain or striation in the screen.
- Do not disassemble the unit by yourself:**
 - Improper disassembly may damage the unit or cause electric shock.
- Do not splash water on the unit:**
 - Install the unit in dry place. In case that the unit gets wet, turn off the unit and contact your dealer.
- Check the ambient temperature and humidity:**
 - Avoid using the unit where the temperature is hotter or colder than specified, otherwise the internal parts may get affected.
 - Special care is required to use the unit at high temperature and humidity.
- In case of trouble:**
 - If any trouble occurs while you are using the unit, turn off the power and contact your dealer to avoid worse problem or unpredictable accident.
- About operation:**
 - Keep the unit away from magnetic equipments such as microwave oven or big speaker. If the unit will not be used for a long time, please switch it off.
- About clean:**
 - Use soft cloth to clean the unit. Do not use any impregnant, such as alcohol, benzene. If you have any problem, please contact your dealer.

Specifications and accessories

Specifications:



Accessories:



Mounting Bracket



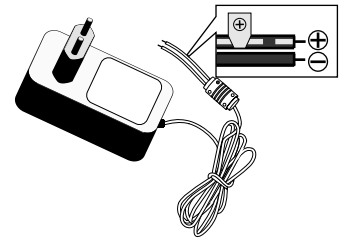
Screw



Expansion plug



Screw

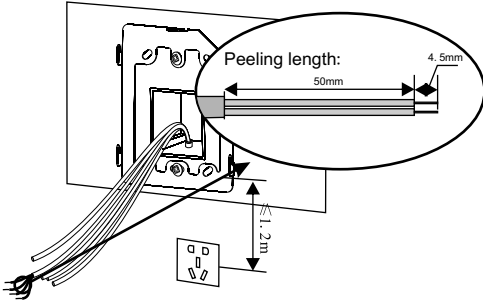
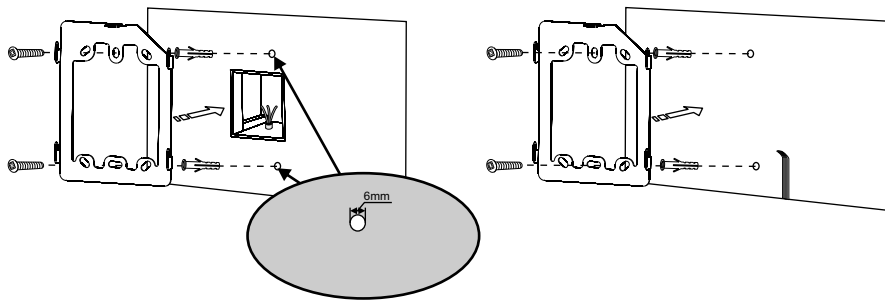


Input: AC110~240V, 50Hz/60Hz

Output: DC13.5V/600mA

Power adaptor (optional)

Installation instruction

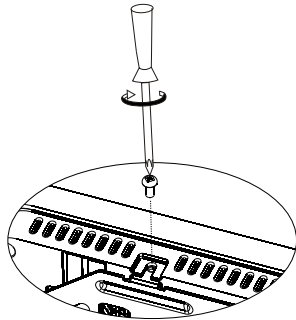
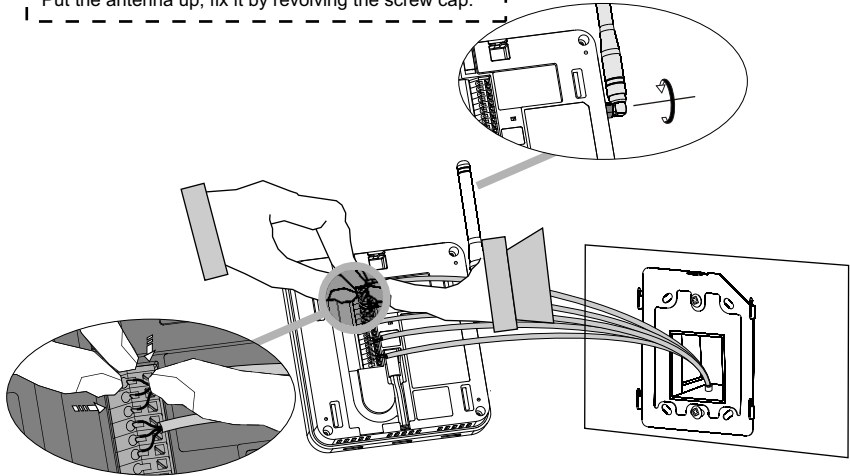


Please install this unit near the power socket (the distance should be less than 1.2m).

1. Concealed wiring: fix the bracket on the connection box which already installed on the wall.
Open wiring: drill 2 holes which distance should be 8.4cm, insert 2 expansion plug, then fix the bracket with screws.

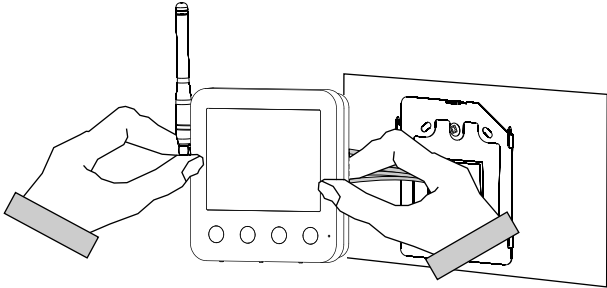
2. As the picture showing, pull out the wire out of bracket, then peel the wire cover, see the peeling length on the picture.

Put the antenna up, fix it by revolving the screw cap.



3. According to the picture, fix the antenna to the unit firstly, and then connect the wires according to the wiring diagram.

Remark: To avoid the signal interference, please keep the distance from indoor monitor to 401G between 3m to 20m.



4. After connection, pack up the wire into the connection box, hang up the unit to the bracket, and then fix it by M3*6 screws. (After hang up, power on the unit to test if the unit can work properly.)